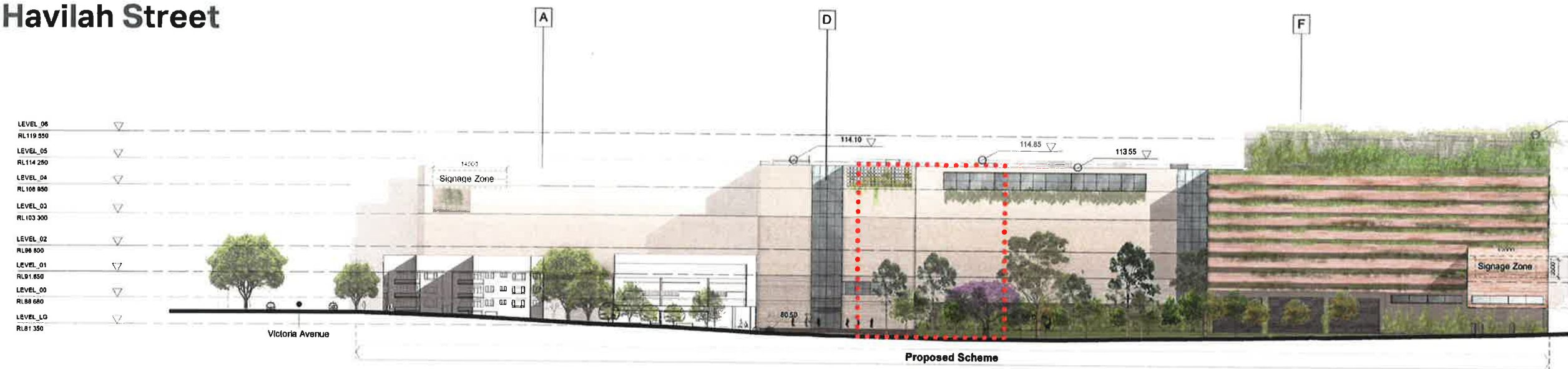


Elevation

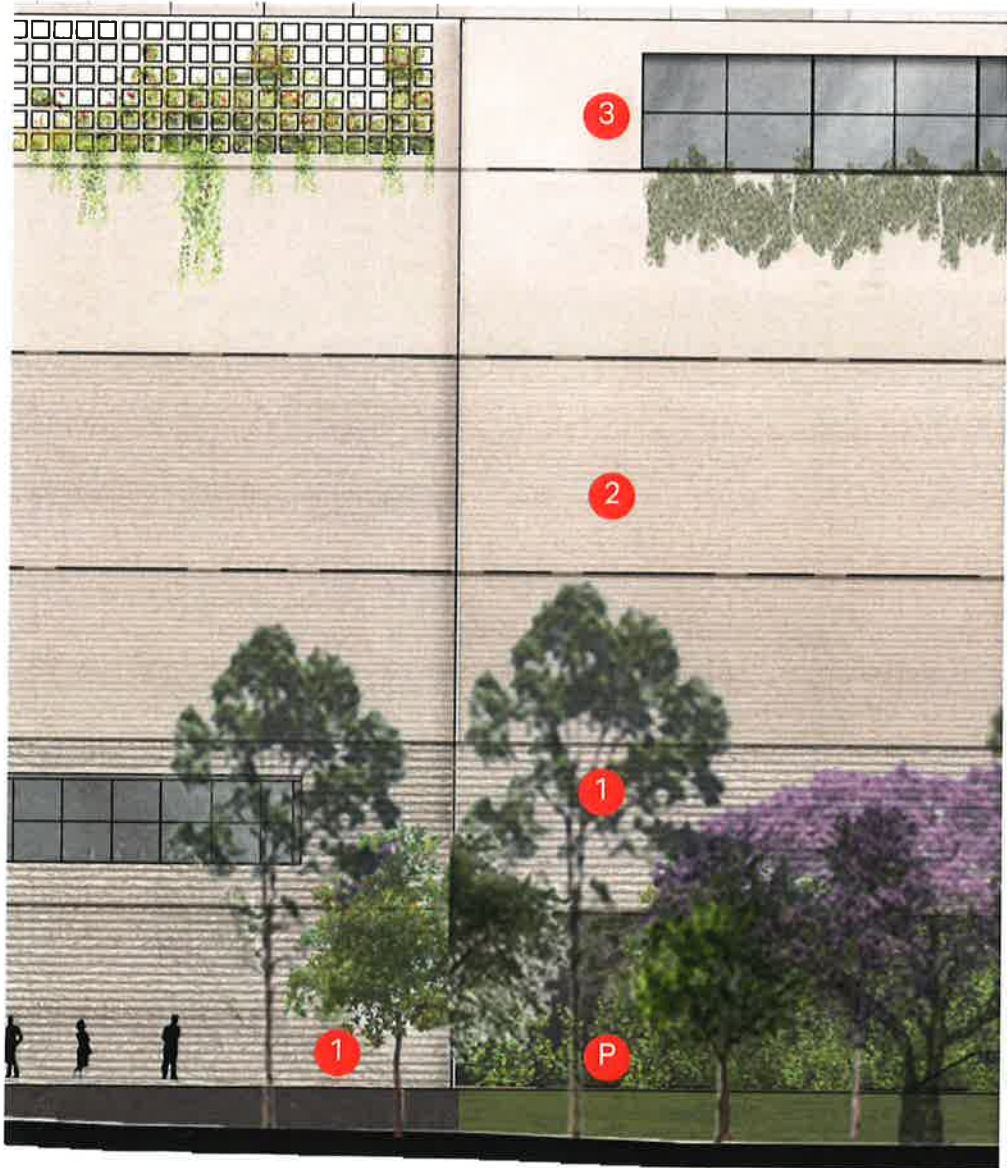
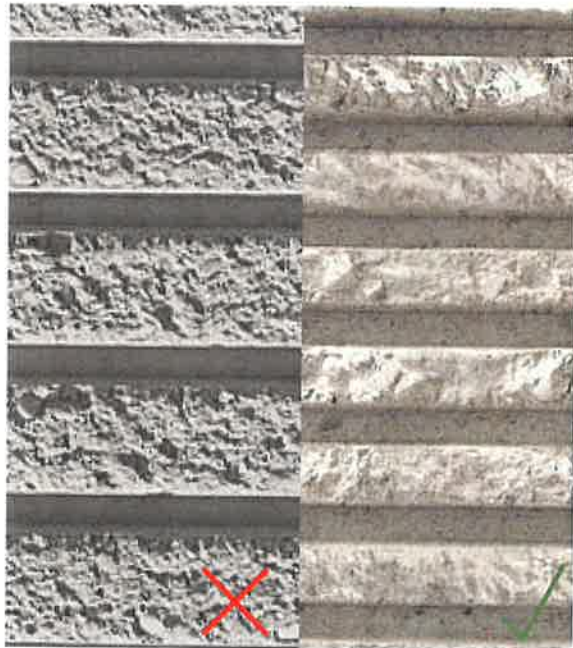
Havilah Street



- Series of pavilions forming a cohesive whole
- Textured facade from rusticated base to refined top
- Separation of individual pavilions forming vertical entrance statement with recessed glazed curtain walls
- Building setback from street frontage to reinforce entrance
- Enhanced ground plane planting to response to surrounding residential area
- Common datum expressed between building with structure above car park, greened and intentionally visually recessive
- Improved landscape quality and plaza extent at relocated pedestrian entry
- Identification of pavilion and functions through materiality change between car parking and retail
- Light tone to typical buildings with textual finish

Proposed concrete pattern ridge sizes used to emphasis natural striation and avoid module appearing to be of construction module i.e. Brick size. Additionally limited by proprietary nature of product and method of construction.

- 1 Concrete finish with large rusticated horizontal banding
- 2 Concrete finish with small rusticated horizontal banding
- 3 Simplified concrete finish



Level 3+4

3

Level 1+2

2

20mm gap
20mm ridge
(20mm depth)

25mm gap
25mm ridge
(45mm depth)

1

Level LG+00

P